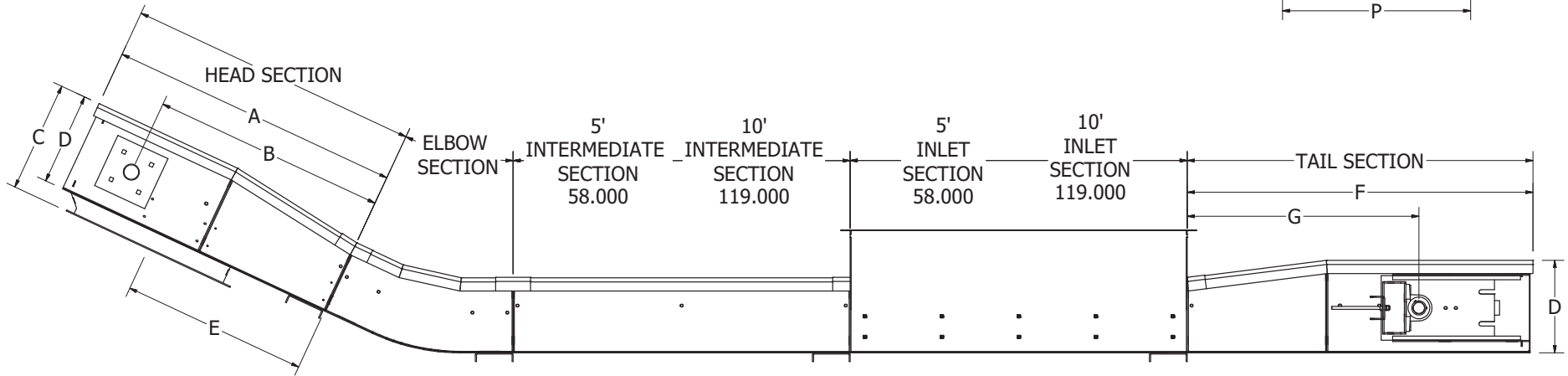
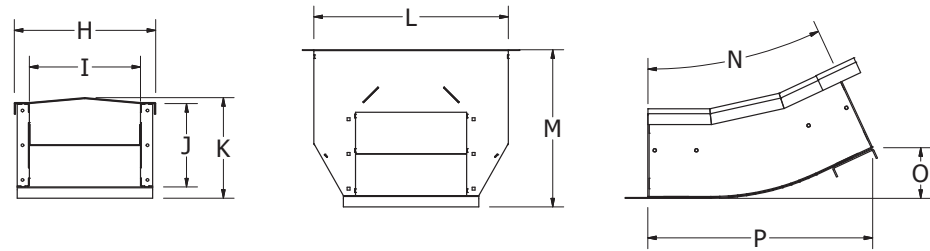




Chain Conveyor Spec Sheet Incline



MODEL	G						L								
	A	B	C	D	E	F	MIN	MAX	H	I	J	K	MIN	MAX	M
10 x 9	50.255"	41.750"	15.834"	12.646"	36.041"	59.500"	42.000"	46.500"	14.149"	10"	9"	11.146"	22.000"	32.500"	17.385"
16 x 9	50.255"	41.750"	16.096"	12.646"	32.041"	59.500"	42.000"	46.500"	20.149"	16"	9"	11.149"	26.000"	48.500"	19.635"
16 x 12	50.255"	40.250"	19.096"	15.909"	32.041"	59.500"	41.375"	45.500"	20.149"	16"	12"	14.409"	28.000"	48.500"	22.635"
18 x 15	50.255"	38.750"	22.184"	18.996"	30.041"	64.500"	42.750"	48.250"	22.149"	18"	15"	17.308"	30.000"	58.625"	26.635"
20 x 18	66.510"	53.500"	25.315"	22.080"	44.310"	78.475"	54.300"	60.366"	24.149"	20"	18"	20.688"	34.000"	48.000"	31.635"
21 x 21	68.510"	54.000"	28.339"	25.124"	44.310"	80.475"	54.250"	60.500"	25.149"	21"	21"	23.732"	35.000"	54.000"	34.635"
24 x 24	70.510"	54.000"	31.490"	28.255"	44.310"	82.475"	55.000"	61.400"	28.149"	24"	24"	26.863"	38.000"	54.000"	39.635"

MODEL	N				O				P			
	15°	25°	35°	45°	15°	25°	35°	45°	15°	25°	35°	45°
10 x 9	15°	25°	35°	45°	3.384"	6.468"	10.180"	14.407"	24.681"	28.567"	31.859"	34.456"
16 x 9	15°	25°	35°	45°	3.384"	6.468"	10.180"	14.407"	24.681"	28.567"	31.859"	34.456"
16 x 12	15°	25°	35°	45°	3.691"	7.311"	11.807"	17.043"	27.011"	32.370"	37.021"	40.820"
18 x 15	15°	25°	35°	45°	3.990"	8.154"	13.435"	19.679"	29.340"	36.175"	42.183"	47.184"
20 x 18	15°	25°	35°	45°	4.304"	8.997"	16.783"	24.436"	31.670"	39.978"	52.800"	58.669"
21 x 21	15°	25°	35°	45°	4.508"	10.827"	17.868"	26.193"	33.222"	48.233"	56.244"	62.912"
24 x 24	15°	25°	35°	45°	5.694"	11.952"	22.333"	32.537"	42.226"	53.304"	70.404"	78.225"

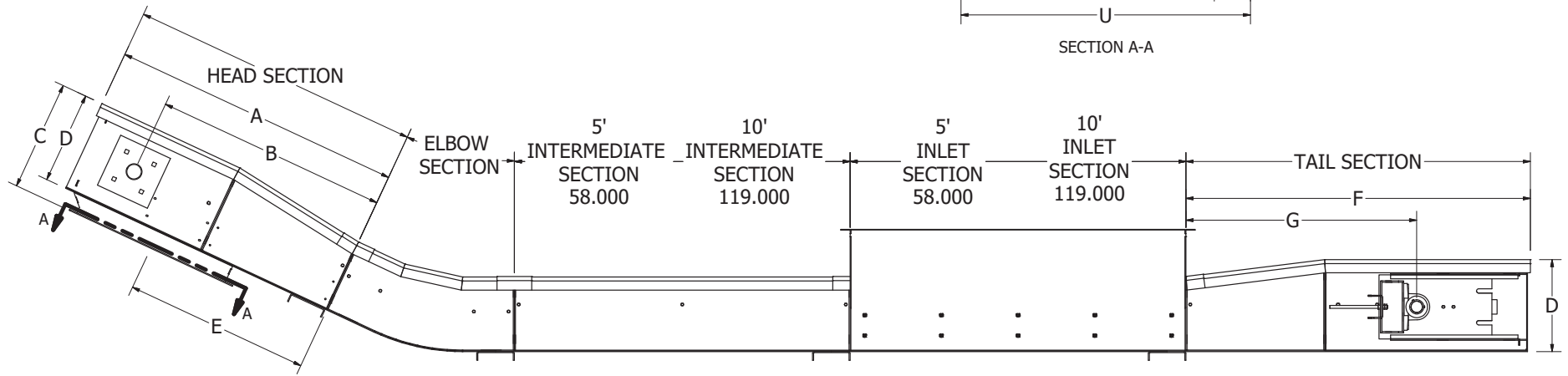
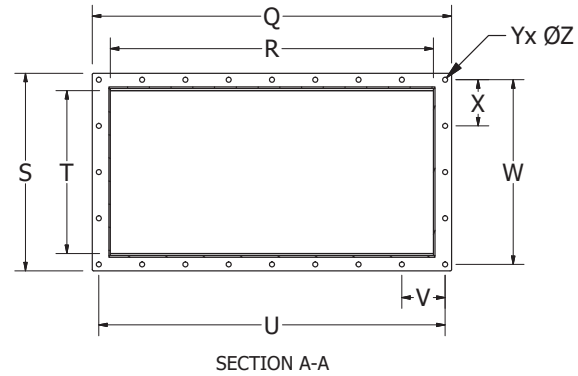
To calculate an approximate discharge height;

$$(\sin(N) \times (\text{Total Length of Inclined Intermediate Sections} + E)) - (C - D) + O$$



Chain Conveyor Spec Sheet

Incline



MODEL	Q	R	S	T	U	V	W	X	Y	Z
10 x 9	22.625"	20.125"	12.625"	10.125"	21.625"	5.406"	11.625"	5.813"	12	0.438"
16 x 9	31.125"	28.125"	17.125"	14.125"	30.000"	3.750"	16.000"	4.000"	24	0.438"
16 x 12	31.125"	28.125"	17.125"	14.125"	30.000"	3.750"	16.000"	4.000"	24	0.438"
18 x 15	35.125"	32.125"	19.125"	16.125"	34.000"	4.250"	18.000"	4.500"	24	0.438"
20 x 18	39.125"	36.125"	21.125"	18.125"	38.000"	4.750"	20.000"	5.000"	24	0.438"
21 x 21	43.125"	40.125"	23.125"	20.125"	42.000"	5.250"	22.000"	5.500"	24	0.438"
24 x 24	47.125"	44.125"	25.125"	22.125"	46.000"	3.833"	24.000"	4.000"	36	0.438"